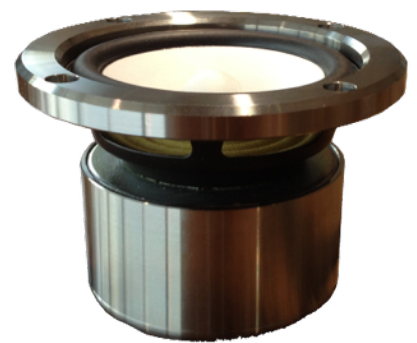




**HIVI**  
HI-END CAR SPEAKER

**C-3F**

**FULL RANGE**

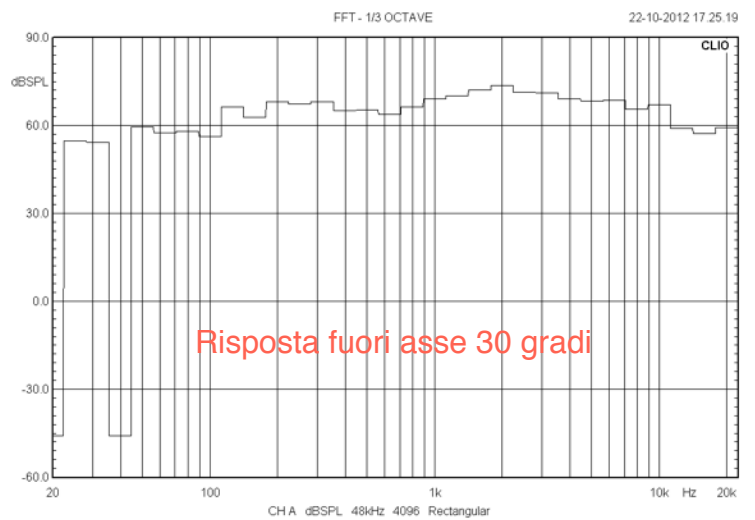
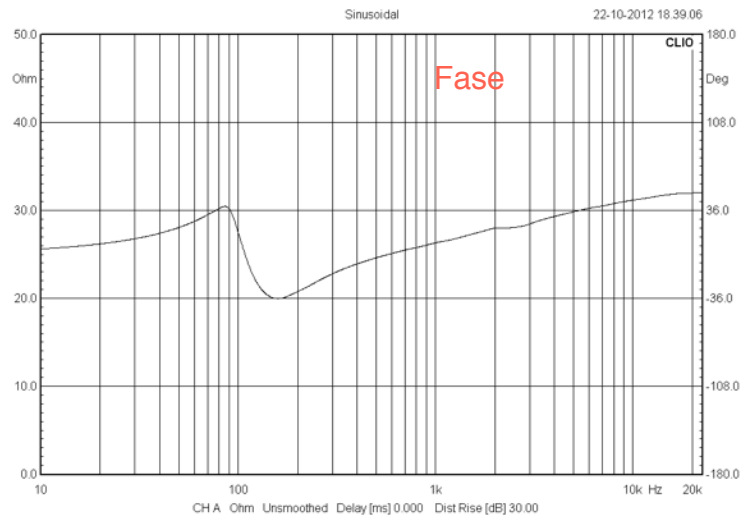
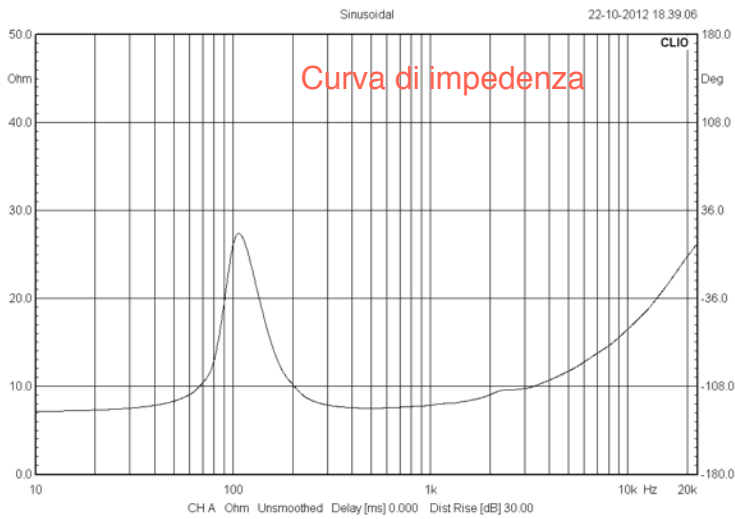


### Parametri

Resonance frequency [fs]	113,81 Hz
Mechanical Q factor [Qms]	2,72
Electrical Q factor [Qes]	0,846
Total Q factor [Qts]	0,648
BXL	3,2
Moving mass [Mms]	1,81 g
Suspension compliance [Cms]	1,08 mm/N
Equivalent volume [Vas]	0,98 l
Sensitivity (2.83V/1m)	84,35 dB
DC resistance [Re]	2,8 ohm
L-1K	0,65
Effective piston area [Sd]	0,0026mt



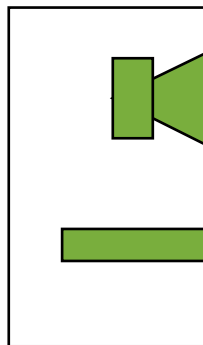
# Grafici di risposta





**HIVI**  
HI-END CAR SPEAKER

## Progetto in cassa reflex



Dimensione del box	2.0 litri
frequenza di accordo	88hz
frequenza f3	90,73hz
diametro del tubo	30mm
lunghezza del tubo	112,6

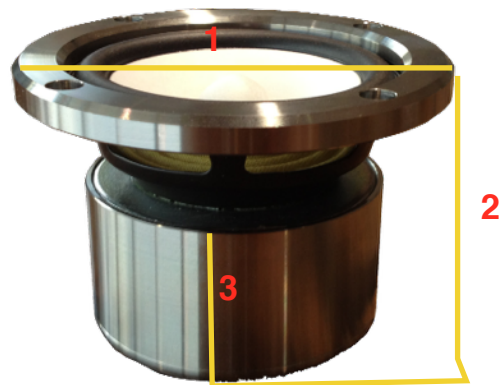
risposta simulata in 2 litri



**HIVI**  
HI-END CAR SPEAKER

**C-3F**

**FULL RANGE**



### Misure

Larghezza, da flangia a flangia (mis. n. 1)	9,2cm
Larghezza interna	7,4cm
Altezza(mis. n. 2)	6,3cm
Altezza cupola in alluminio (mis. n. 3)	3,5cm